

Ablaze!

Dave Frincke

Piano

Chords: B \flat , E \flat , F

The piano introduction consists of four measures in 4/4 time. The right hand features a rhythmic pattern of eighth notes and quarter notes, while the left hand plays a steady eighth-note accompaniment. Chords B \flat , E \flat , and F are indicated above the staff.

5

Verse 1 Pure lo - ve has co - me and saved us by His bl - o - od. Oh Fa - ther,
Verse 2 Oh Je - sus, birth in us Your vi - sion for the na - tions all com - ing,

5

Chords: B \flat , E \flat , G m7, F, B \flat

2nd time - both hands 8va

Pno.

The piano accompaniment for the first verse spans measures 5 to 9. It features a melodic line in the right hand and a harmonic accompaniment in the left hand. Chords B \flat , E \flat , G m7, F, and B \flat are indicated above the staff. A performance instruction '2nd time - both hands 8va' is placed between the staves for measures 7 and 8.

10

ig - nite in us a pas - sion for Je - sus!
all bow - ing, all prais - ing, all con - fes - sing:

10

Chords: E \flat , F, E \flat , B \flat

Pno.

The piano accompaniment for the second verse spans measures 10 to 14. It continues the melodic and harmonic patterns from the first verse. Chords E \flat , F, E \flat , and B \flat are indicated above the staff.

To invite Dave Frincke to come to your church to lead worship, speak or hold a ministry concert, you can email him at: [Invites @DaveFrincke.com](mailto:Invites@DaveFrincke.com)

Visit www.DaveFrincke.com to check out other original music

Ablaze!

2

15



Con - su - ming fire, be our one de - sire!
"Con - su - ming fire, You are our one de - sire!"

C m7 B^b/D C m7 B^b/D E^b F F^{sus} F

15

Pno.



20

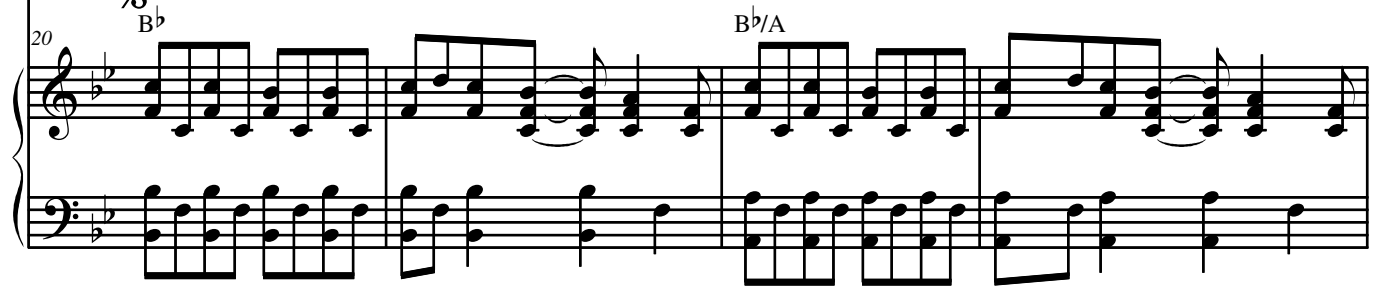


Fill us to o - ver-flow - ing. Let our hearts be bur - ning



20

Pno.



24



with Your lo - - - ve! Send us out in the dark - ness to

E^b/G F F^{sus} F B^b

24

Pno.



Ablaze!

28

share Your e - ter - nal prom - ise. Lord, let Your love

Pno.

28 B^b/A E^b/G F F^{sus} F

32

set the world a-blaze!

Pno.

32 E^b F B^b E^b

36

Re-

Pno.

36 F B^b E^b F

Ablaze!

4

41

store to me the joy, re - store to me the joy, re -

Pno.

41 B \flat E \flat

45

store to me the joy of my sal - va - - - - tion. Re -

Pno.

45 B \flat /D E \flat G m7 F

49

store to me the joy, re - store to me the joy, re -

Pno.

49 B \flat E \flat

53

store to me the joy of my sal - va - - - - tion!

Pno.

53 B^b/D E^b G m7 F sus

57 *D.S. al Coda* **CODA**

Lord, let Your love set the world a-blaze!

Pno.

57 F *D.S. al Coda* B^b E^b/G F sus F E^b F

62

Pno.

62 B^b E^b F B^b rit.